

a Milano
Stazione Centrale
€ 370.000
Ref. 2517



319 sq.m | : 2 | : 4

On Via Schiaparelli, MM2 Sondrio, adjacent to the Central Station, we offer for sale a bright, vacant office of approximately 319 square meters, located in a stately building with a concierge and central heating. The property is located in the basement, features full windows, and comprises a large entrance hall with reception desk, a large open-plan corner space, an archive area, and two bathrooms. The property is in good condition and is ideal for use as a showroom, office, and, given its brightness, even as a workshop.

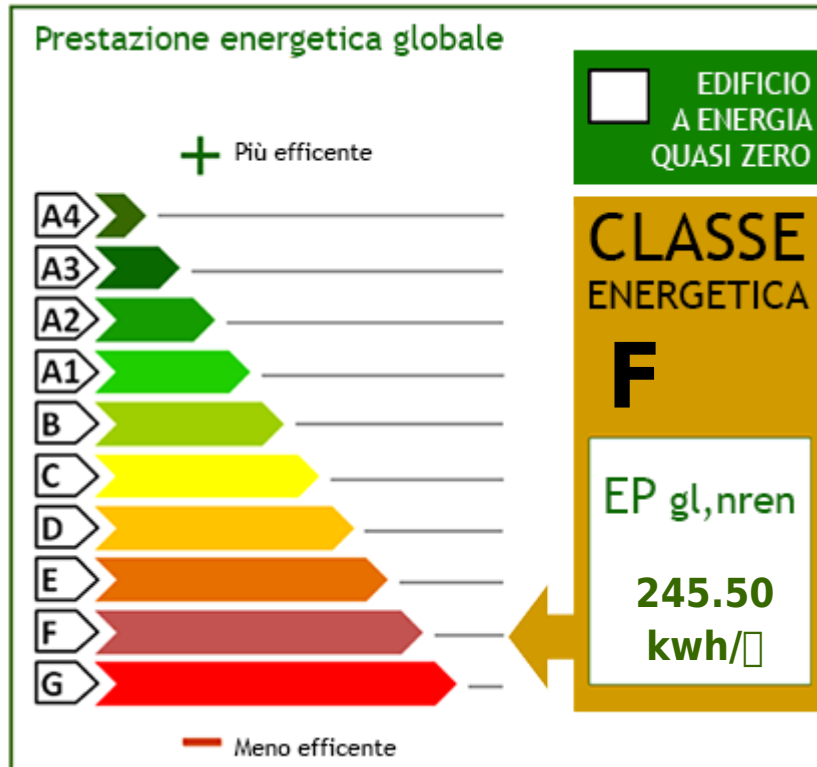
Property Informations

---> **Indirizzo** <---: Via Schiaparelli, 4

---> **CAP** <---: 20100

---> **bagni** <---: 2

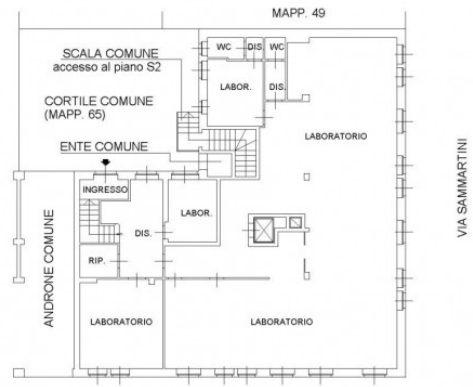
---> **Locali** <---: 4











VIA SCHIAPARELLI

CECCHINI & REGAZZOLA SRL

Via Sandro Sandri 2 - Milano (MI) - Phone number 0289452255 Fax 0289452237
info@cecchiniregazzola.com - <https://www.cecchiniregazzola.com/en>
VAT 06209760963